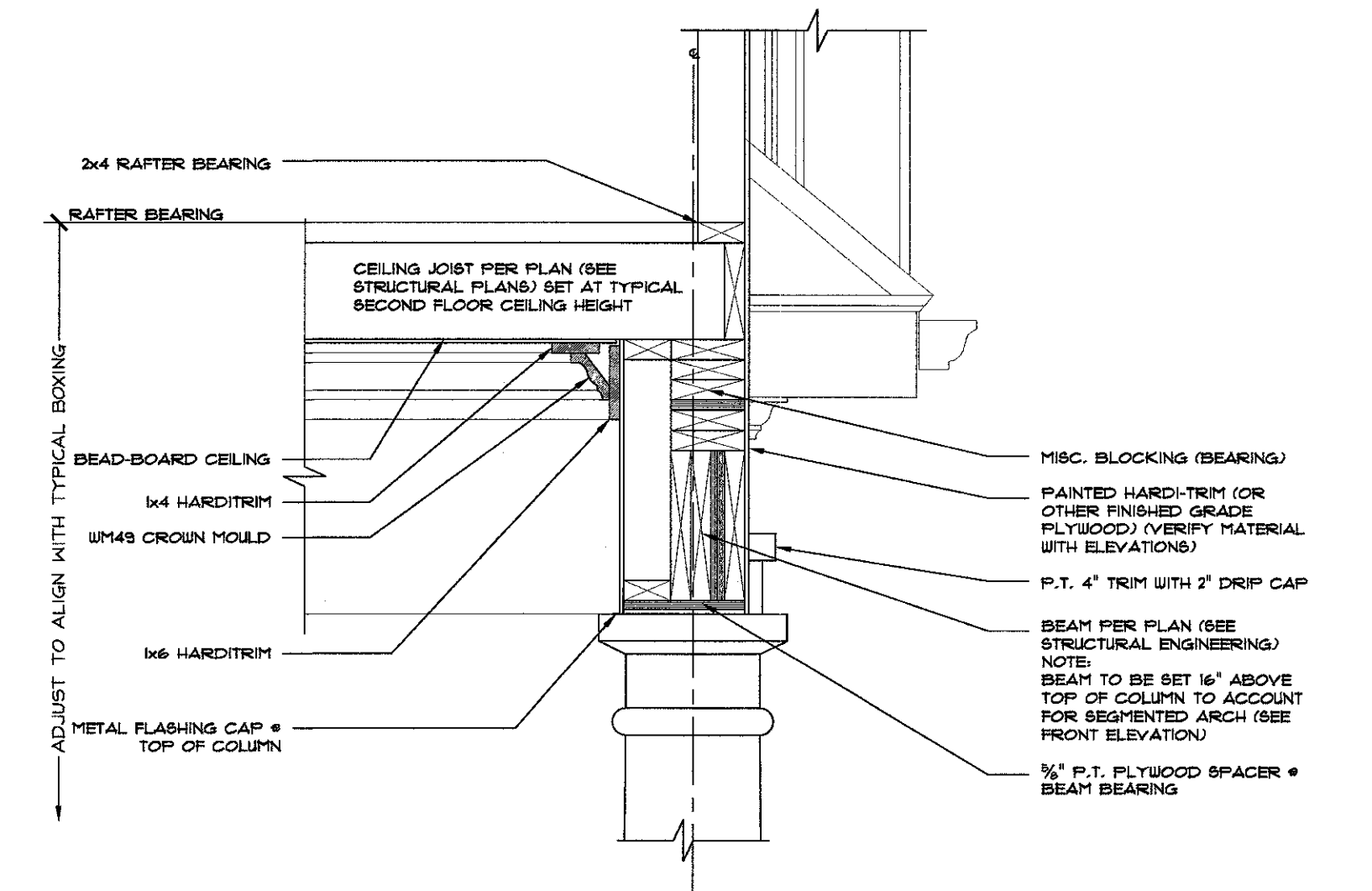
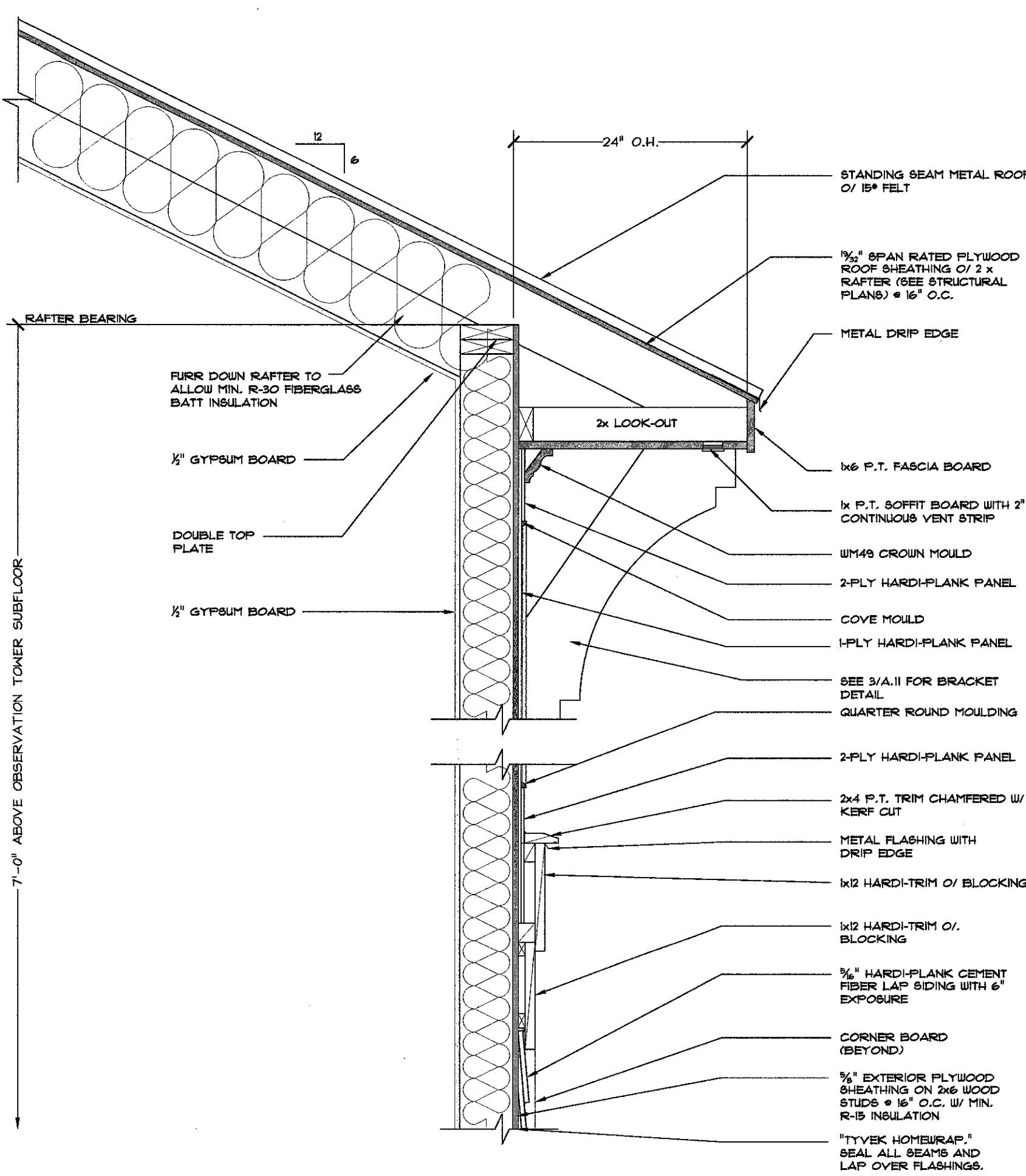
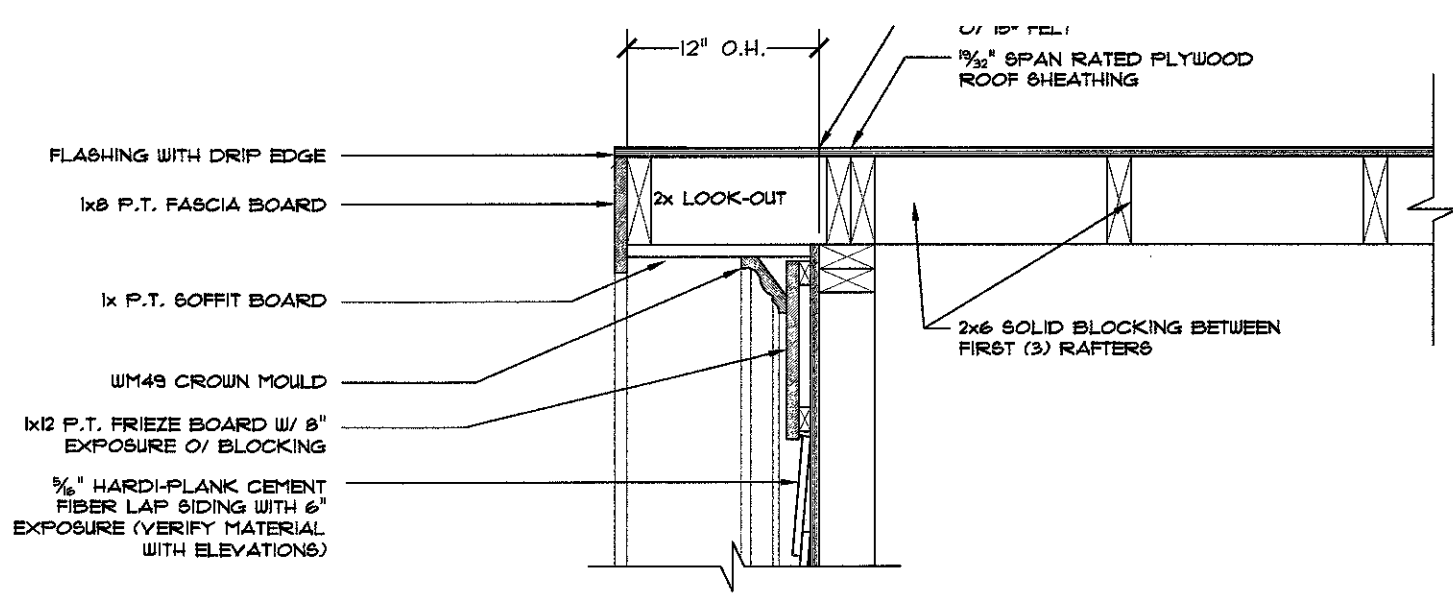


1 TYPICAL CORNICE DETAIL  
1" = 1'-0"

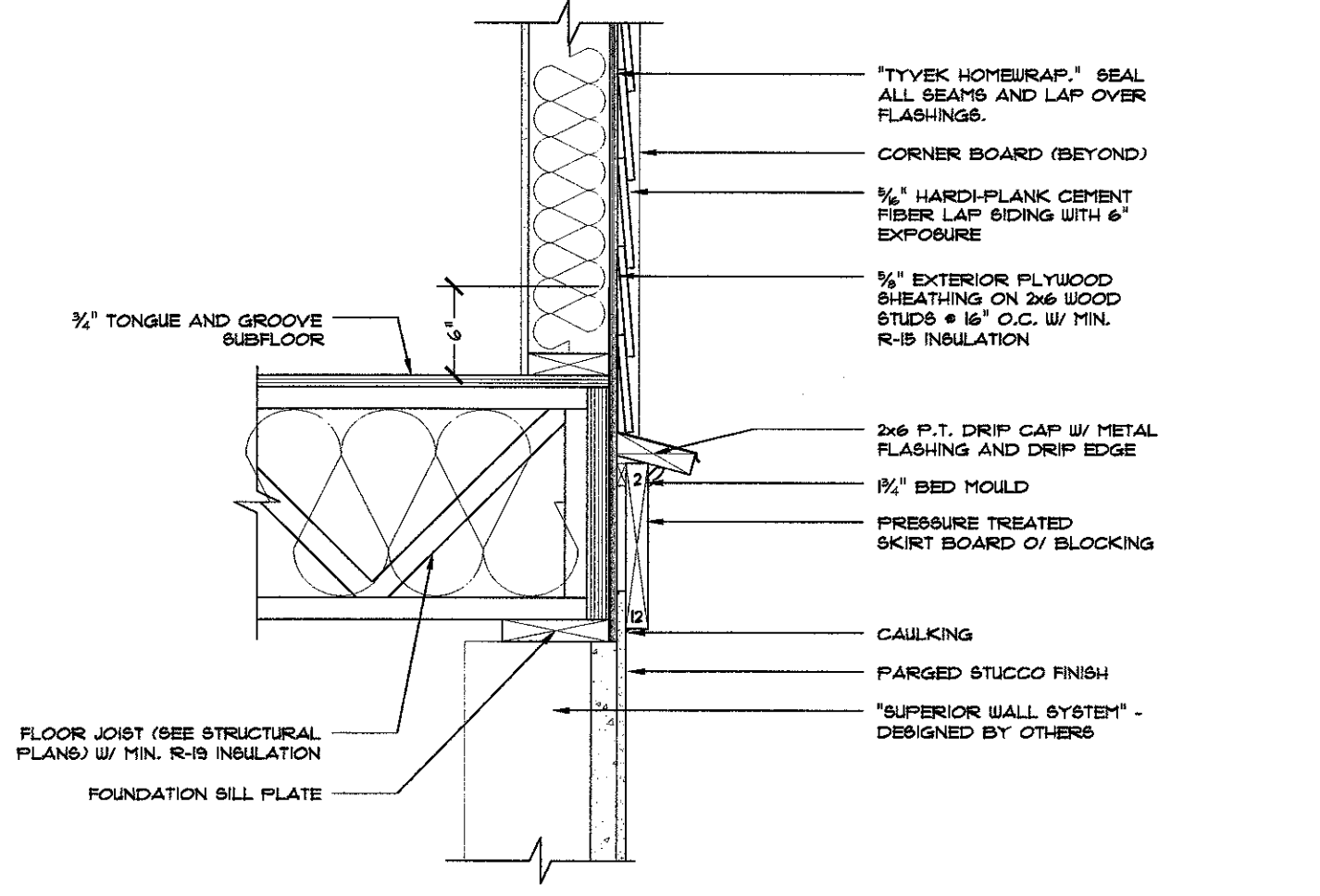
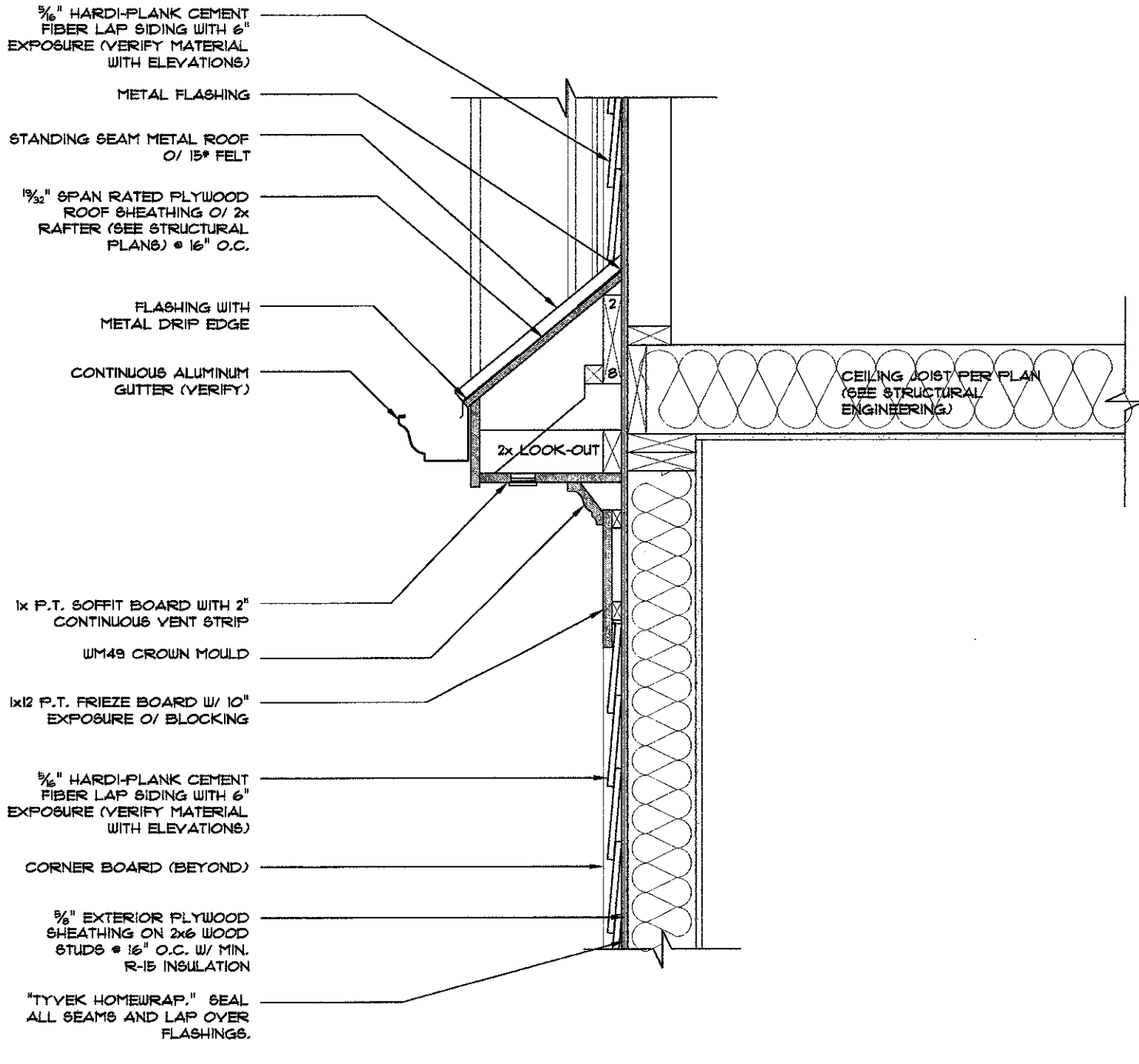
2 CORNICE DETAIL at PORCHES  
1" = 1'-0"

3 CORNICE DETAIL at 24" OVERHANG  
1" = 1'-0"



4 TYPICAL RAKE DETAIL  
1" = 1'-0"

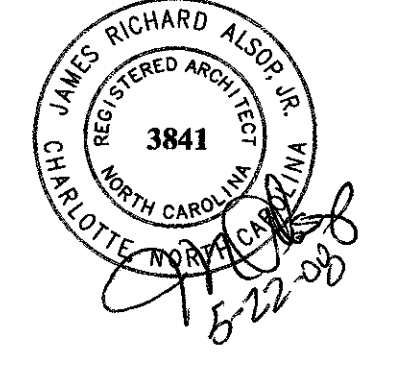
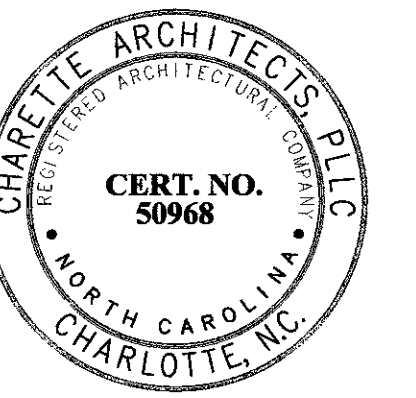
7 DETAIL at PORCHES  
1" = 1'-0"



5 CORNICE RETURN DETAIL  
1" = 1'-0"

6 CORNICE DETAIL at OBSERVATION  
1" = 1'-0"

8 TYPICAL HOUSE BAND DETAIL  
1" = 1'-0"



Only Signed & Sealed Documents  
Are Released for Construction

Released for  
Construction  
05.22.08

Lot 145 Cannonsgate

Details

Revision Date:

- 1.
- 2.
- 3.
- 4.
- 5.

05.22.08  
28012

Scale: See Drawings